

Menuett

Braunschweiger  
Joseph W. Wagn  
Mandel. V. 1912  
B. Kok

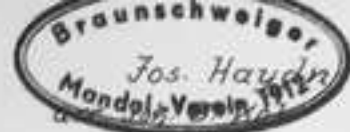
Moderato

The first section of the Minuet is written in G major and 3/4 time. It consists of ten staves of music. The first staff begins with a forte (*f*) dynamic. The second staff has a piano (*p*) dynamic. The third staff has a forte (*f*) dynamic. The fourth staff has a piano (*p*) dynamic. The fifth staff has a forte (*f*) dynamic. The sixth staff has a piano (*p*) dynamic, followed by a *dim.* (diminuendo) marking. The seventh staff has a piano (*p*) dynamic. The eighth staff has a forte (*f*) dynamic. The ninth staff has a forte (*f*) dynamic. The tenth staff ends with a *Fine* marking.

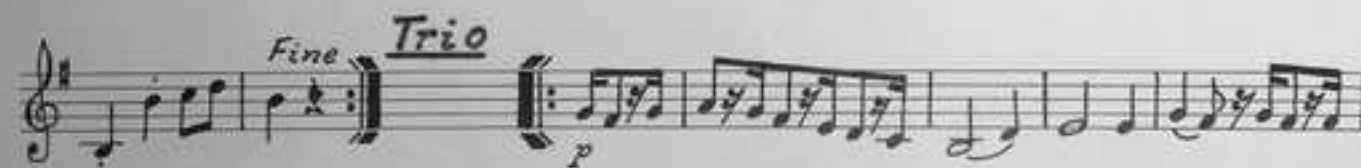
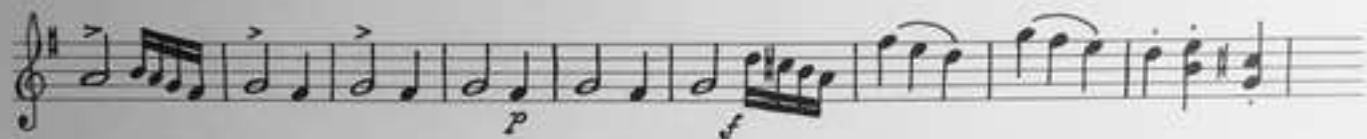
Trio

The Trio section is written in G major and 3/4 time. It consists of four staves of music. The first staff begins with a piano (*p*) dynamic. The second staff has a piano (*p*) dynamic. The third staff has a piano (*p*) dynamic. The fourth staff has a piano (*p*) dynamic and ends with a double bar line and repeat sign. Below the fourth staff, there are two first endings marked '1.' and '2.', leading to the final measure of the section.

D. C. al Fine



Moderato



D. C. al Fine

Mandola

Menuett

Jos. Haydn  
arr. Joh. B. Kok

Moderato

The Moderato section consists of seven staves of music. It begins with a treble clef, a key signature of one sharp (F#), and a 3/4 time signature. The first staff starts with a dynamic marking of *f* (forte) and ends with *p* (piano). The second staff contains a first ending bracket. The third staff has a *p* marking. The fourth staff features a series of sixteenth-note patterns. The fifth staff has a *p* marking. The sixth staff ends with a *ff* (fortissimo) marking. The seventh staff concludes with a *Fine* marking and a double bar line.

Trio

The Trio section consists of four staves of music. It begins with a treble clef, a key signature of one sharp (F#), and a 3/4 time signature. The first staff starts with a *p* (piano) marking and includes a first ending bracket. The second staff features a melodic line with some accidentals. The third staff has a *p* marking. The fourth staff concludes with a first ending bracket, a *p* marking, and the instruction *D.C. al Fine*.

Gitarre

Menuett

Moderato

Jos. Haydn

This section contains the main body of the Minuet score, spanning 10 staves. It begins with a treble clef, a key signature of one sharp (F#), and a 3/4 time signature. The music features a mix of chords and melodic lines. A first ending bracket is present in the third staff. The piece concludes with a double bar line and the word "Fine".

This section contains the Trio part of the score, spanning 3 staves. It starts with a treble clef, a key signature of one sharp (F#), and a 3/4 time signature. The music is primarily chordal. It includes a first ending bracket and concludes with the instruction "D.C. al Fine".

Moderato

The Moderato section consists of ten staves of music. It begins with a treble clef, a key signature of one sharp (F#), and a 3/4 time signature. The first staff starts with a dynamic marking of *f*. The second staff begins with a dynamic marking of *p*. The third staff features a first ending bracket and ends with a dynamic marking of *p*. The fourth staff continues the melodic line. The fifth staff has a dynamic marking of *f*. The sixth staff begins with a dynamic marking of *p*. The seventh staff has a dynamic marking of *f*. The eighth staff has a dynamic marking of *f*. The ninth staff ends with a double bar line and the word *Fine*.

Trio

The Trio section consists of four staves of music. It begins with a treble clef, a key signature of one sharp (F#), and a 3/4 time signature. The first staff starts with a dynamic marking of *p*. The second staff begins with a dynamic marking of *p*. The third staff has a dynamic marking of *p*. The fourth staff ends with a double bar line, the word *D.C. al Fine*, and a dynamic marking of *p*.

