

# NORDICA VALSE.

1st MANDOLIN.

Braunschweiger  
Mandolin-Quartett.

H. TOURJÉE.

Intro.  
Tempo di Gavotte.

Tempo di Valse.

Valse.

D. C. N<sup>o</sup> 1 Int Fine.

Copyright 1894 by J. W. Jenkins Sons.

Sole right to publish above Waltz for Mandolin Orchestra, by permission of Tourjee Music Pub. Co.

2.

Musical score for system 2, measures 1-12. The music is in 3/4 time and G major. It features a melody in the upper voice and a bass line. The first measure has a dynamic marking of *ff*. The piece concludes with a double bar line and repeat dots.

3.

Musical score for system 3, measures 1-12. The music is in 3/4 time and G major. It features a melody in the upper voice and a bass line. The first measure has a dynamic marking of *ff*. The piece concludes with a double bar line and repeat dots. The tempo marking *rit.* is placed above the eighth measure, and *a tempo.* is placed above the ninth measure. The final two measures are marked with first and second endings.

4.

5.

# NORDICA VALSE.

2d MANDOLIN.

Intro.

Tempo di Gavotte.

TOURJÉE.

The Intro section consists of four staves of music. The first staff begins with a treble clef, a common time signature (C), and a key signature of one sharp (F#). The melody is written in a single line. The second staff continues the melody with some rests and a 'rit.' marking. The third and fourth staves continue the melodic line.

The Valse tempo section begins with a treble clef, a 3/4 time signature, and a key signature of one sharp (F#). The music is written in a single line with a repeat sign at the beginning.

The first Valse section begins with a treble clef, a 3/4 time signature, and a key signature of one sharp (F#). The music is written in a single line with a repeat sign at the beginning.

Continuation of the first Valse section, measures 9-10.

Continuation of the first Valse section, measures 11-12.

Continuation of the first Valse section, measures 13-14. The section ends with a 'Fine.' marking.

The second Valse section begins with a treble clef, a 3/4 time signature, and a key signature of one sharp (F#). The music is written in a single line with a repeat sign at the beginning.

Continuation of the second Valse section, measures 17-18.

Continuation of the second Valse section, measures 19-20.

2.

Musical score for exercise 2, consisting of four staves of music in treble clef with a key signature of one sharp (F#). The first staff begins with a treble clef, a 2/4 time signature, and a sharp sign. The music features a mix of chords and single notes, with some measures containing rests. The piece concludes with a double bar line.

3.

Musical score for exercise 3, consisting of eight staves of music in treble clef with a key signature of one sharp (F#). The first staff includes the markings *rit.* and *a tempo.* The music is primarily composed of chords, with some melodic lines in the lower staves. The piece ends with a double bar line and two first/second endings.



4. *f* *pp*

5. *rit.* *a tempo.* *rit.* *a tempo.*

*D.S. No 1. al*

# NORDICA VALSE.

3d MANDOLIN.

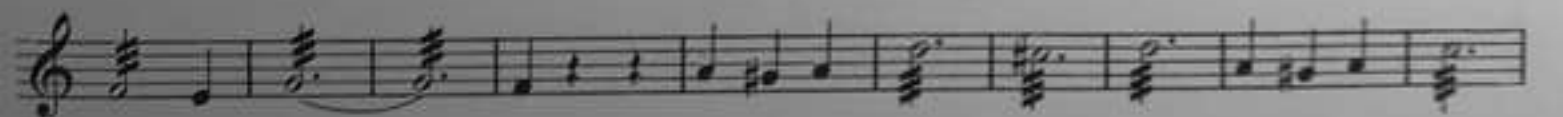
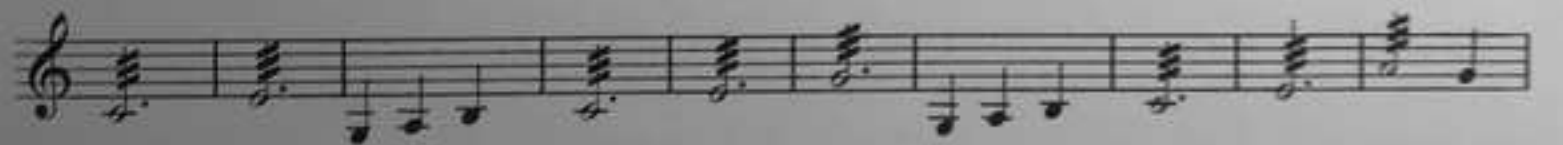
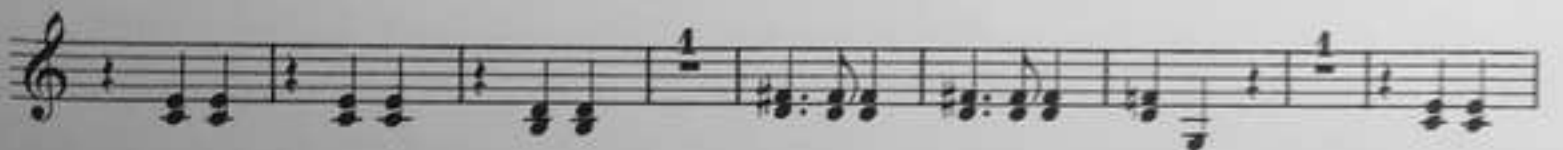
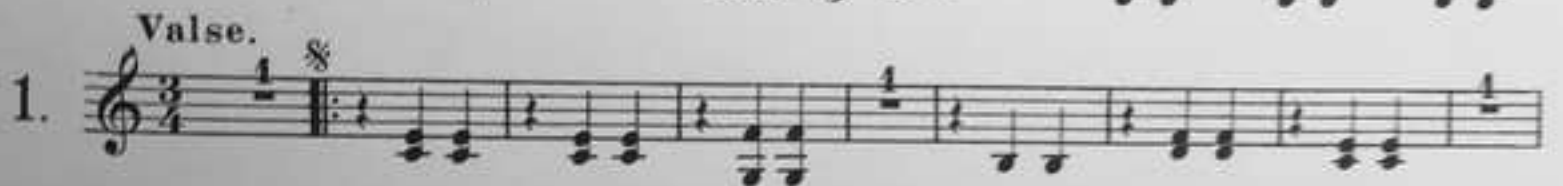
TOURJÉE.

Intro.

Tempo di Gavotte.



Tempo di Valse.



Copyright 1894 by J. W. Jenkins Sons.

Sole right to publish above Waltz for Mandolin Orchestra, by permission of Tourjée Music Pub. Co.

2.

ff

3.

rit.

pp

1 2



4.

*rit. a tempo.*

5.

1 2

D. S. N<sup>o</sup> 1. ol

# NORDICA VALSE.

GUITAR.

Intro.

Tempo di Gavotte.

TOURJÉE.

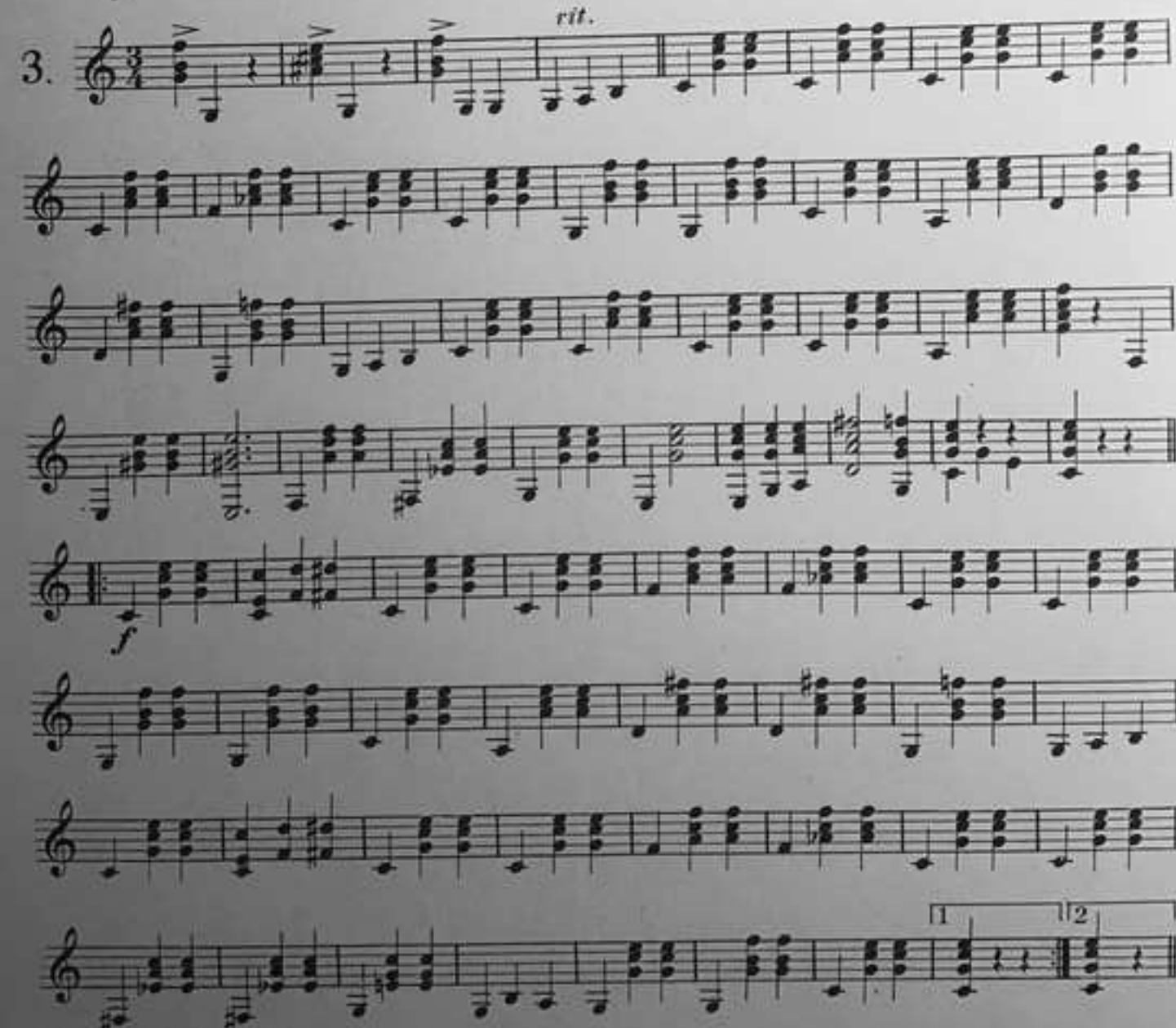
The Intro section consists of three staves of music. The first staff begins with a treble clef, a common time signature (C), and a dynamic marking of *p*. The second staff includes dynamic markings of *f*, *rit.*, and *p*, and a tempo marking of *a tempo.* The third staff features a dynamic marking of *f* and a tempo marking of *Tempo di Valse.* The key signature has one sharp (F#).

The main Valse section begins with a first ending bracket over the first staff, which includes a repeat sign and a double bar line. The section continues with ten staves of music. The key signature has one sharp (F#) and the time signature is 3/4. The section concludes with a double bar line, a first ending bracket, and a *Fine.* marking.

Copyright 1894 by J. W. Fenix Sons.

Sole right to publish above Waltz for Mandolin Orchestra, by permission of Tourjée Music Pub. Co.

2. 

3. 

4.

5.